

# BILL OF MATERIALS

## Concrete and Blocks

- 175 cu. yds. of concrete... 500 lin. ft. of 3/4" R Bars
- 775... 8" x 8" x 16" conc. blocks
- 8 sacks of masonry cement

1/4 cu. yd. washed sand and 5 cu. yds. of gravel fill

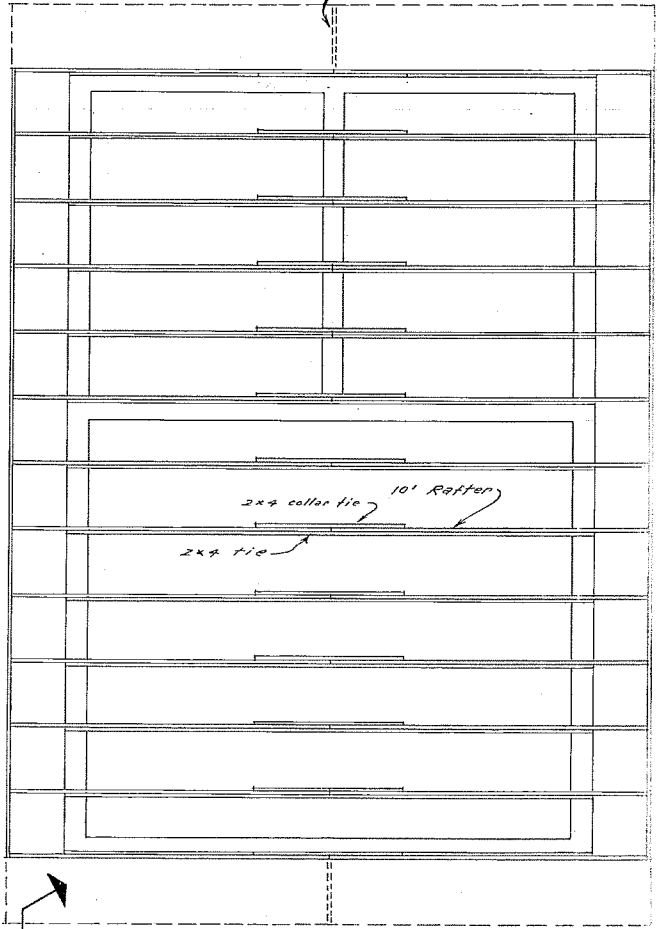
## Steel Lintels (pre-cast concrete lintels can be used if desired)

- 7 window opening... 14 - 3 1/2" x 3 1/2" x 1/4" x 4'0" steel angle irons welded
- 3 door openings... 6 - 3 1/2" x 3 1/2" x 1/4" x 4'-8" angles

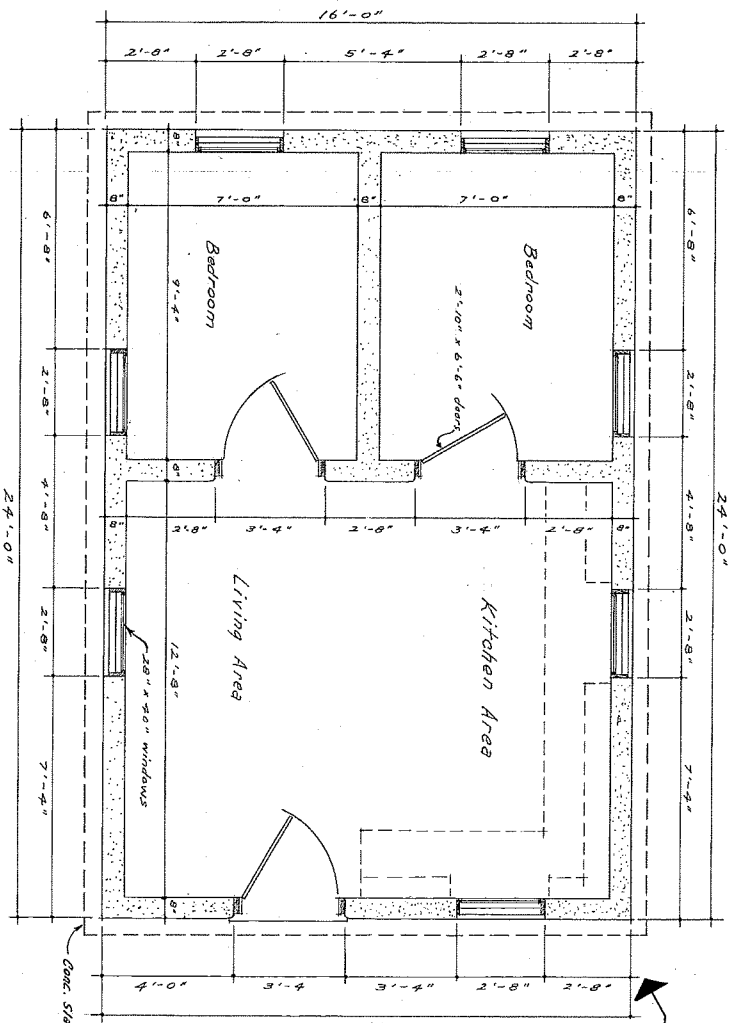
## Lumber and Misc. Equipment

- 26 - 2x6 x 10' Rafters or 32 - 2x4 x 10' rafters
- 13 - 16" x 2x4 ties
- 13 - 4'6"x2x4 ties
- 16 sheets - 4x8 x 1/2" or 3/8" C-C Ext. grade plywood roof sheathing
- 12 sheets - 4x8 x 3/8" A-C Int. grade plywood ceiling
- 140 lin. ft. of 2x6 framing for windows and doors
- 7 - 28" x 40" windows and 3 - 2'-10" x 6'-8" doors
- 154 lin. ft. of 2x8 wall plate and fascia board
- 480 sq. ft. of roofing... asphalt shingles or roll roofing
- 480 sq. ft. of 15# felt paper and 5 gal. of roll roofing cement
- 384 sq. ft. of 2" insulation
- 2 - 8" x 12" commercial joists
- 188 lin. ft. of 1x2 fascia trim board and batten strips
- 2 sheets 1/2" on 3/8" x 4x8 Ext. grade plywood on 60 sq. ft. of panel/wall siding for gabled ends
- 30 lin. ft. of 2x4 studs of 16" oc. for gabled ends

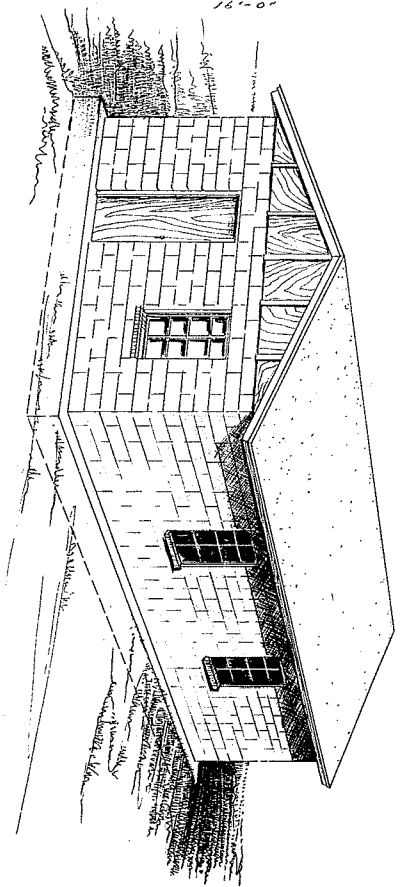
Ridge beam may be used if overhang on ends is desired

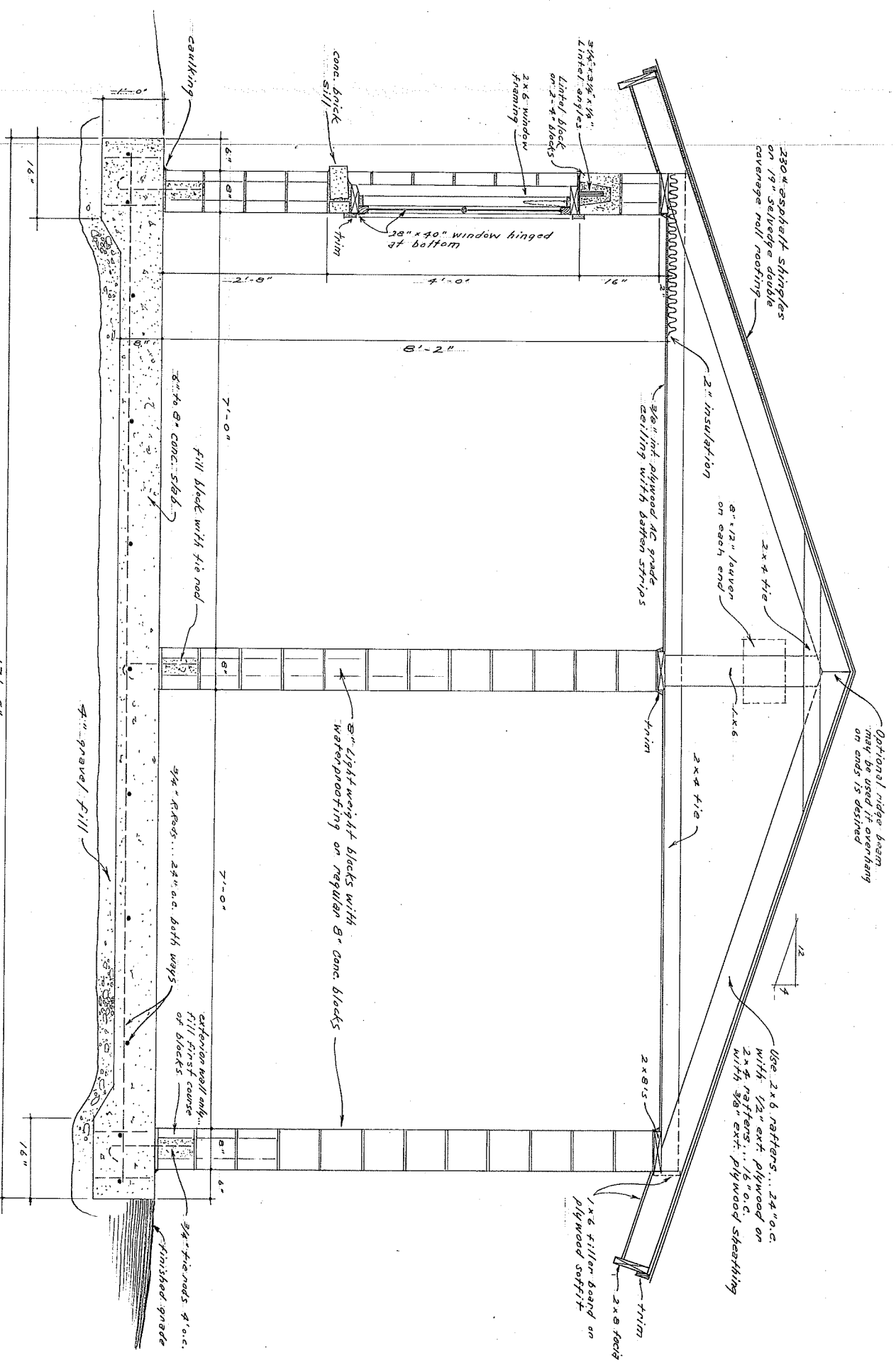


Roof Framing Detail



Floor Plan





Cross Section View